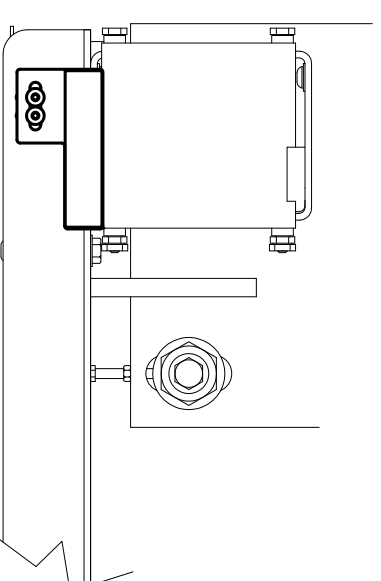
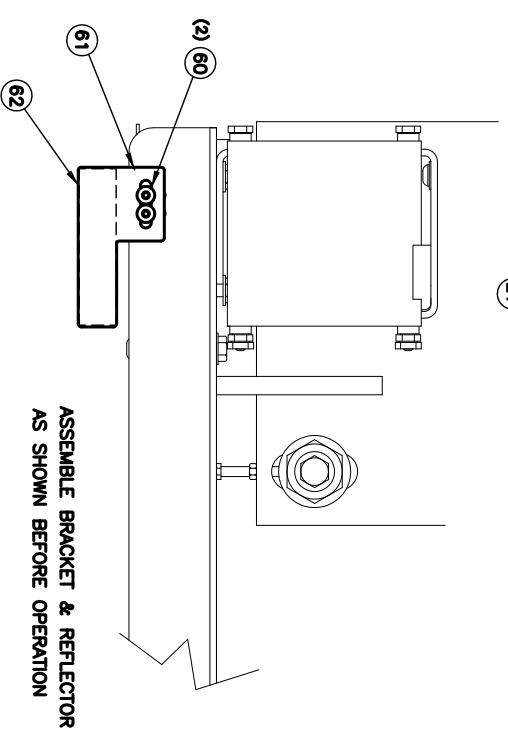
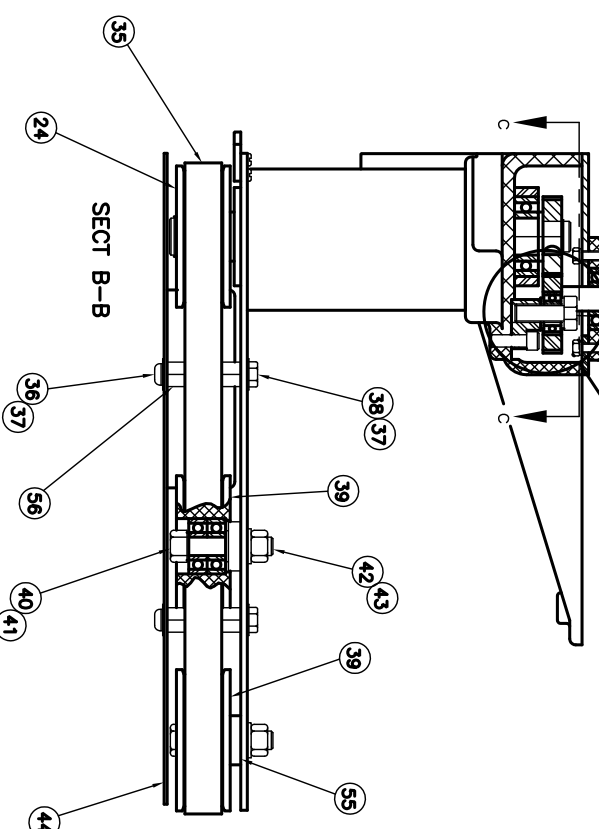
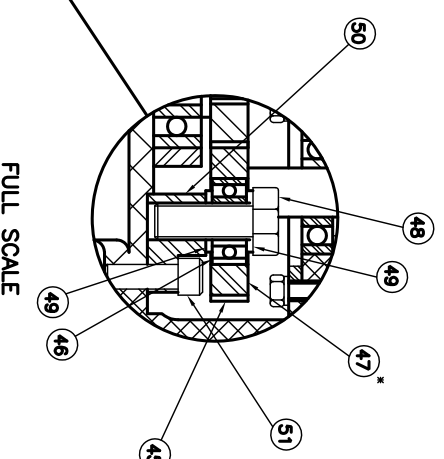
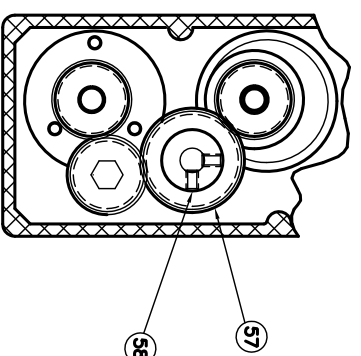
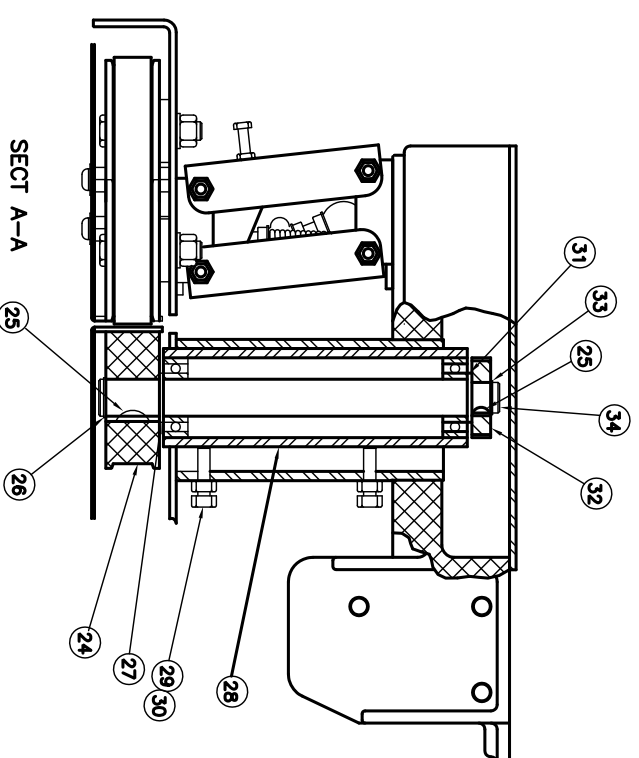
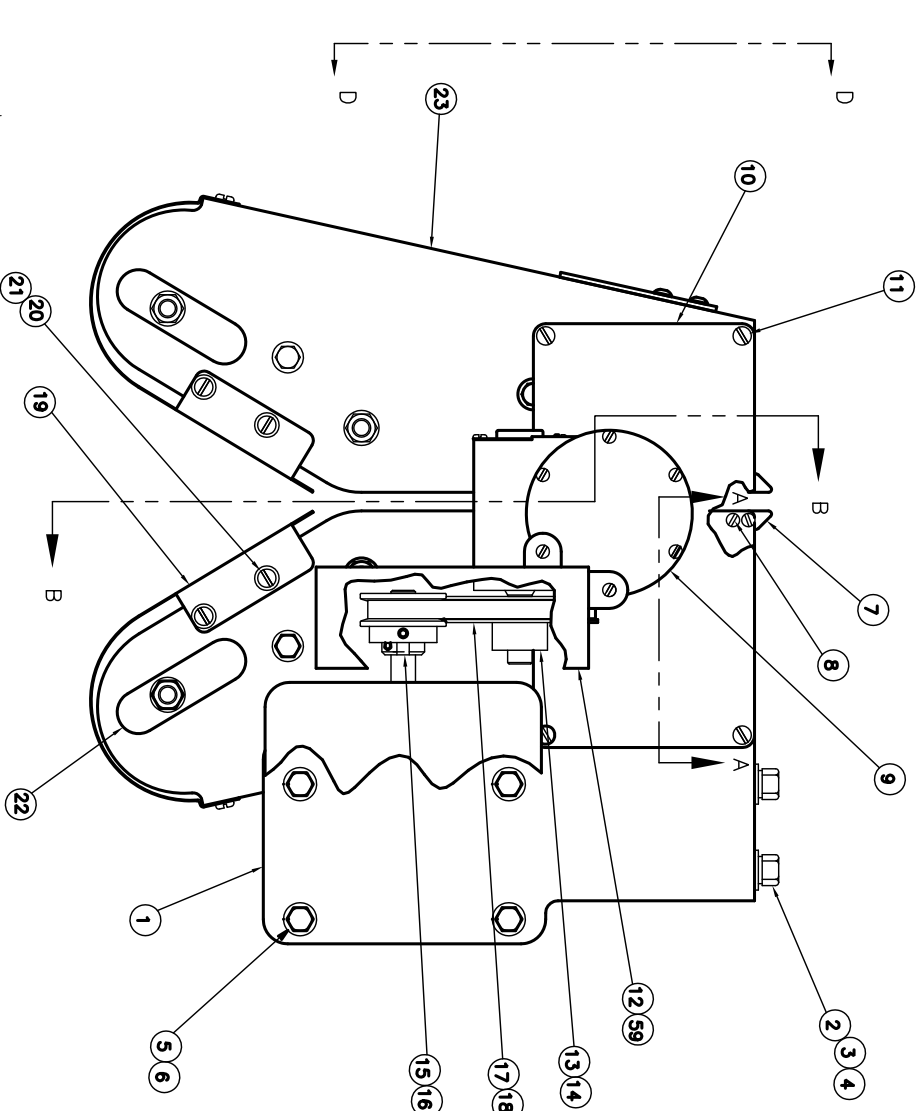


REV	ENH	CHANGES	DATE	DR	CK
V		071492 SEE SHEET 1	6/07	MTA	RT
W		08315181 CHG ITEM 5 (WAS H5161834)	1/09	MTA	

\* CUSTOMER USE

62	1	A1794	REFLECTOR	A
61	1	A1793	BRACKET, REFLECTOR	A
60	2	SPH03214	SCREW, SOC BTN #10-.32 X 1/4	A
59	1	10757	LABEL, WARNING GUARDS	A
58	2	SS142038	SCREW, SOC SET 1/4-20 X 3/8	A
57	1	A4222	GEAR, DRIVE	A
56	2	A4237	SPACER, HEX	A
55	2	A4220	WASHER, STEP	A
54	REF	NH1032	NUT, HEX #10	A
53	REF	WL10	WASHER, LOCK #10	A
52	REF	H103298	SCREW, HEX 10-32 X 5/8	A
51	2	SC103298	SCREW, SOC CAP 10-32 X 5/8	A
50	1	A4377	IMOUNT, GEAR-IDLER	A
49	2	10215	WASHER, THRUST	A
48	1	H38161	BOLT, HEX 3/8-16 X 1	A
47	1	A4298	ASSY, GEAR-IDLER	A
46	1	P4297	BEARING, BALL (IDLER GEAR)	A
45	1	T3145-1	GEAR, IDLER	A
44	1	CA392	GUARD, UNDER-RIGHT	B
43	2	WS38	WASHER, SPRING 3/8	A
42	2	NH3816	NUT, HEX 3/8	A
41	2	A3934	WASHER, IDLER	A
40	2	H3816134	BOLT, HEX 3/8-16 X 1 3/4	A
39	2	A4394	ASSY, IDLER PULLEY W/BRG	B
38	2	H142068	SCREW, HEX 1/4-20 X 5/8	A
37	4	WS14	WASHER, SPRING 1/4	A
36	2	SB142038	SCREW, SOC BTN 1/4-20 X 3/8	A
35	1	P4390	BELT, TIMING	A
34	1	A4285	SHAFT, DRIVE-BELT	A
33	1	V2542	RING, SNAP	A
32	1	T3155	GEAR, DRIVEN	A
31	1	A4212	SPACER, GEAR	A
30	4	NH1420	NUT, HEX JAM 1/4-20	A
29	4	H142078	SCREW, HEX 1/4-20 X 7/8	A
28	1	A4355	ASSY, TUBE SPINDLE (FIXED) W/BEARING	A
27	1	A4213	SPACER, PULLEY	A
26	1	T3167	RING, SNAP	A
25	2	T3192	KEY, WOODRUFF	A
24	1	A4393	PULLEY, DRIVE 2.88 OD X .75 BORE	B
23	-	-	ASSY, PRINT #1	A
22	1	A2727	COVER, BEARING	A
21	3	WF10	WASHER, FLAT #10	A
20	3	B103214	SCREW, BTN 10-32 X 1/4	A
19	1	B4384	GUARD, BELT-FRONT	B
18	REF	P4228-120	BELT, DRIVE-13" (35-47 FPM)	A
17	REF	P4228-120	BELT, DRIVE-12" (48-70 FPM)	A
16	REF	A4335	ASSY, ADJUST PULLEY (35-47 FPM)	A
15	REF	A4338	ASSY, ADJUST PULLEY (48-70 FPM)	A
14	REF	P4207	PULLEY, 3.3/16 OD 1/2 BORE (35-47 FPM)	A
13	REF	P4206	PULLEY, 2.4 OD 1/2 BORE (48-70 FPM)	A
12	REF	CA4225	GUARD, BELT-TOP FEED	B
11	6	B103238	SCREW, BTN 10-32 X 3/8	A
10	1	A4217	COVER, HOUSING	B
9	1	B4273	ASSEMBLY, BOX-GEAR	C
8	2	BS4014	SCREW, BTN 5-40 X 1/4	A
7	1	A4231	FINGER, GUIDE	A
6	4	WF516	WASHER, FLAT 5/16	A
5	4	H5161812	SCREW, HEX 5/16-18 X 1/2	A
4	3	WF38	WASHER, FLAT 3/8	A
3	3	WL38	WASHER, LOCK 3/8	A
2	3	H3816114	BOLT, HEX 3/8-16 X 1 1/4	A
1	1	CA381	SUB, ASSY HOUSING	C
ITEM	QTY	DWG NO.	DESCRIPTION	
52				

\*



SECT D-D  
1/2 SCALE  
ASSEMBLY BRACKET & REFLECTOR  
AS SHOWN FOR SHIPPING ONLY



<b>FISCHBEIN LLC</b> 18 TOWN ROAD, GREENVILLE, SC 29615 PHONE: (803) 871-1111 FAX: (803) 871-1111 WWW.FISCHBEIN.COM		SCALE: FULL SHEET: 2 OF 2 PART NUMBER: D4380 REV: W
DATE: 06/22/94 DRAWN BY: JTB CHECKED BY: JTB ALL DIMENSIONS ARE IN INCHES UNLESS OTHERWISE SPECIFIED.	TITLE: ASSY, INFEED-HINGED SIDE DRAWN BY: JTB CHECKED BY: JTB	35114