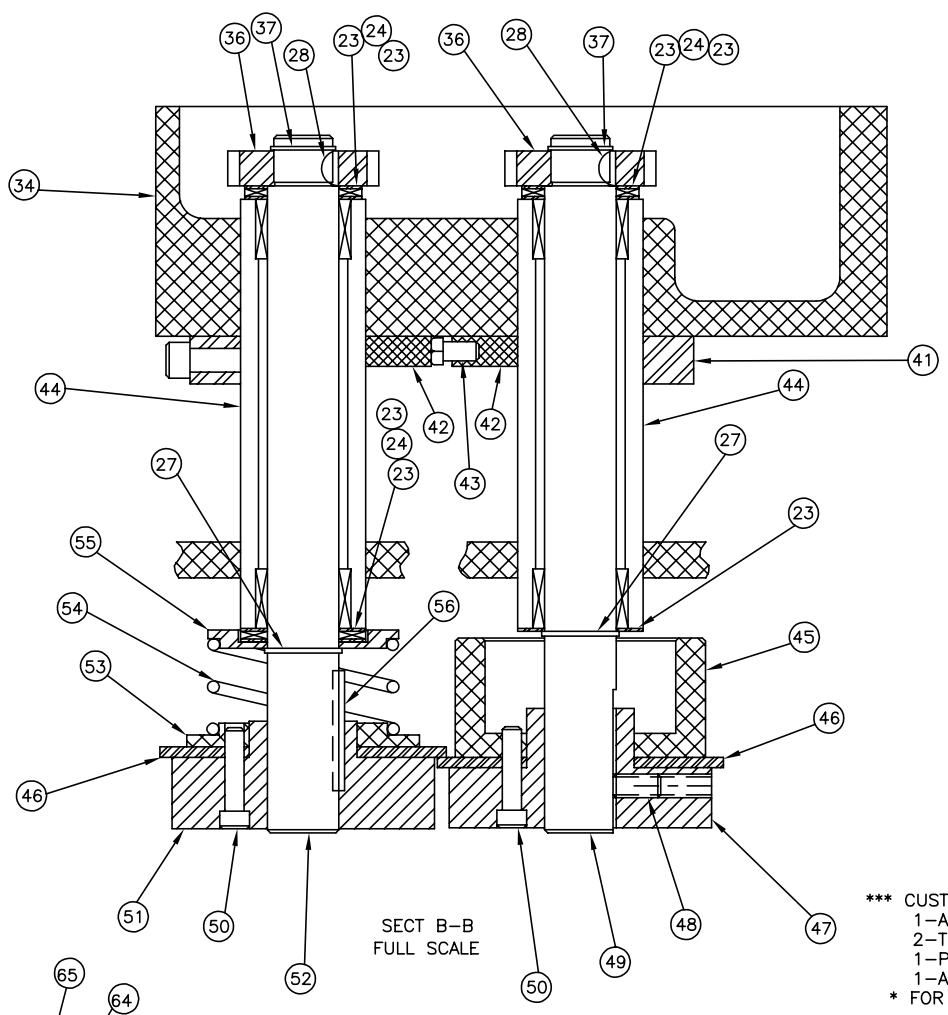
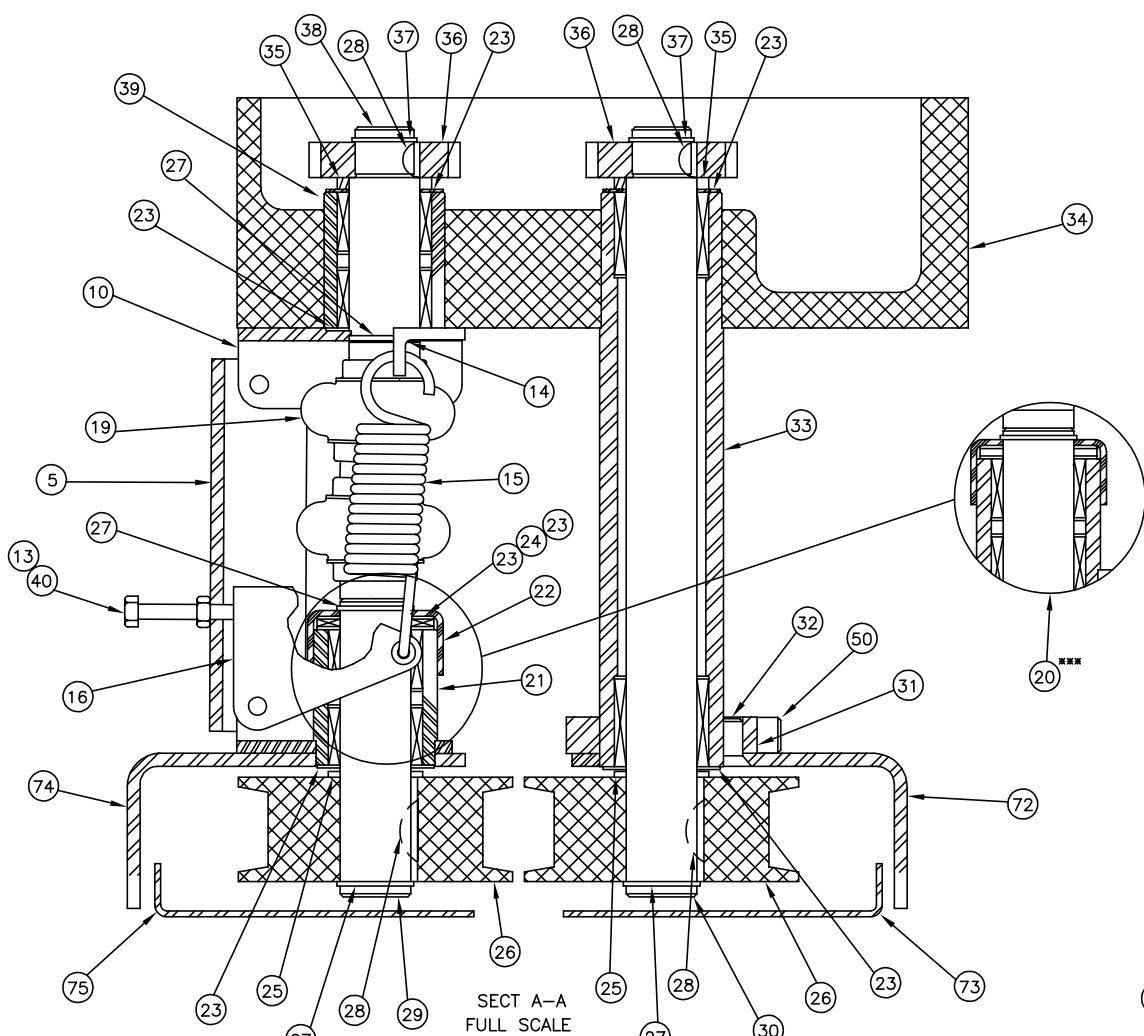
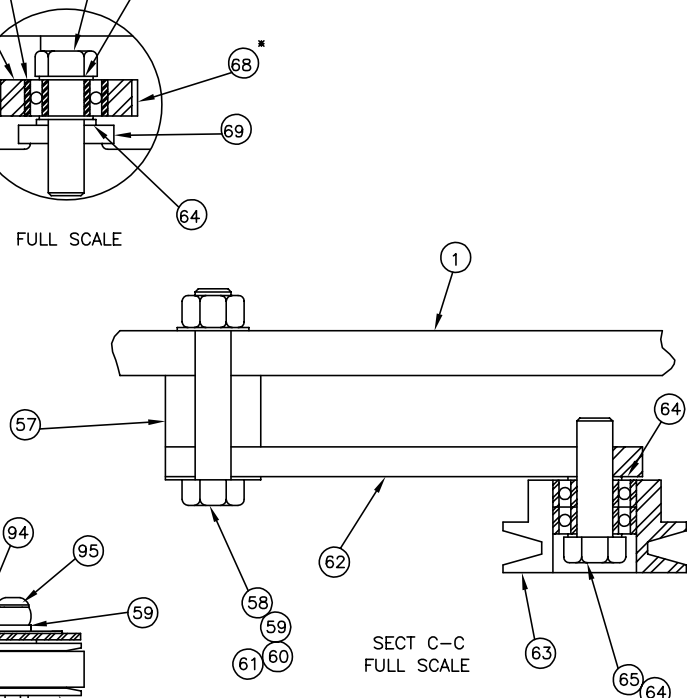
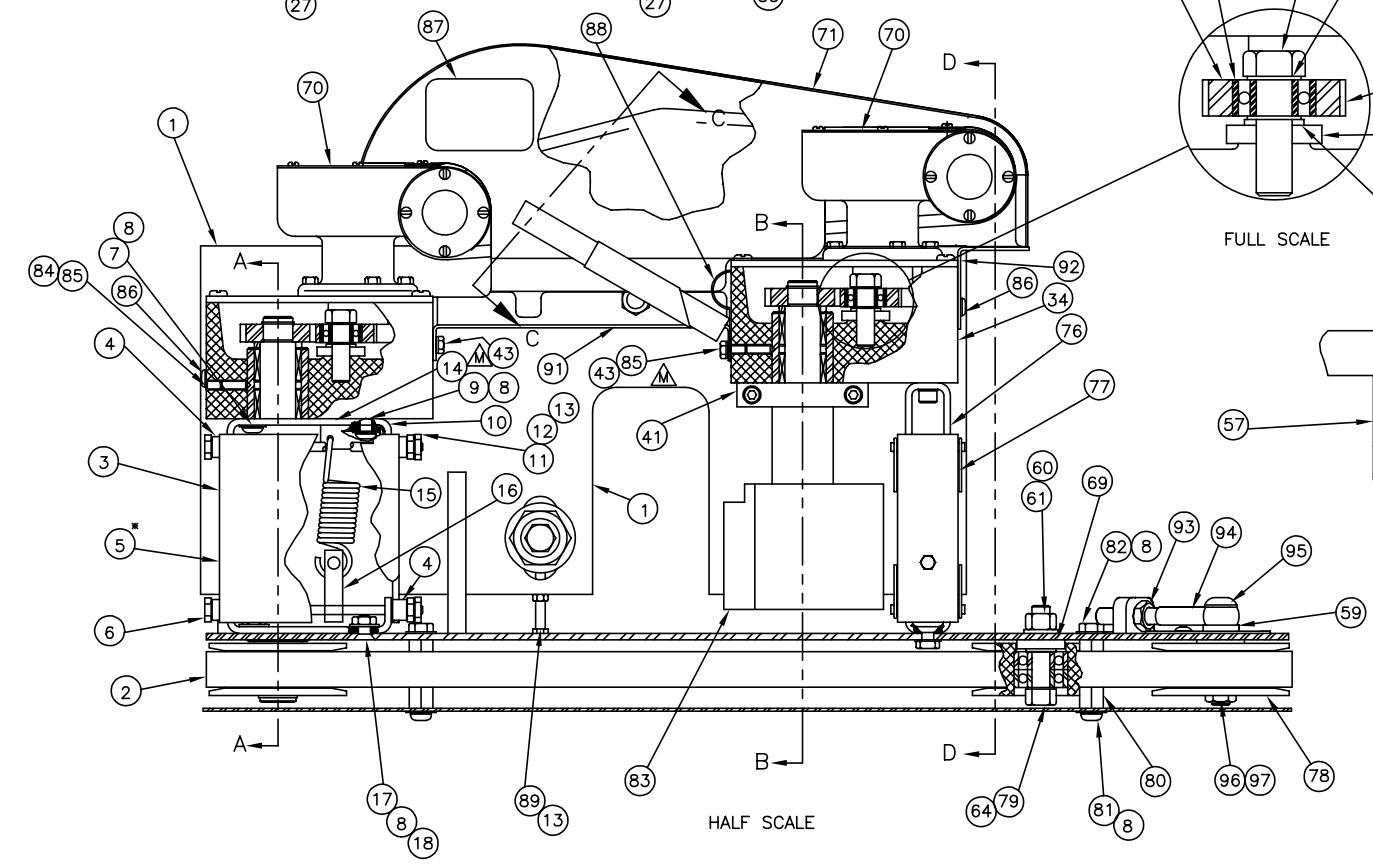


REV	ECN	CHANGES	DATE	DR	CK
N	9826312	SEE SHEET 3	9/98	JS	RS
0	001081	RVS ITEMS 59 (1) 60 (5) 61 (5) 64 (10) 79 (4). ADD ITEMS 93-97	6/00	AB	



*** CUSTOMER REPLACEMENT PART #A2673
 1-A2615
 2-T3129
 1-P4024
 1-A2728
 * FOR CUSTOMER USE



FISCHBEIN COMPANY
 CONFIDENTIAL AND PROPRIETARY
 INFORMATION

ITEM	QTY	DWG NO.	DESCRIPTION	SIZE
62	1	A2642	LEVER, IDLER	A
61	3	NH3816	NUT, HEX 3/8-16	-
60	3	WS38	WASHER, SPRING 3/8	-
59	3	WF38	WASHER, FLAT 3/8	-
58	1	H38162	BOLT, HEX 3/8-16 X 2	-
57	1	A2641	SPACER, ILDER	A
56	1	A2772	KEY	A
55	1	A2629	SEAT, SPRING	A
54	1	A2630	SPRING, KNIFE	A
53	1	A2764	HUB, FEED-LEFT	A
52	1	A2610	SHAFT, KNIFE-LEFT	B
51	1	A2761	HUB, KNIFE-LEFT	B
50	7	SC103278	SCREW, SOC CAP 10-32 X 7/8	-
49	1	A2609	SHAFT, KNIFE-RIGHT	B
48	1	SS142012	SCREW, SOC SET 1/4-20 X 1/2	-
47	1	A2755	HUB, KNIFE-RIGHT	B
46	2	A2626	KNIFE	B
45	1	A2758	HUB, FEED-RIGHT	A
44	2	A2603	ASSY, KNIFE DRIVE TUBE W/BRG	A
43	6	H103238	SCREW, HEX 10-32 X 3/8	-
42	2	A2729	SPACER, DRIVE TUBE	A
41	1	B2664	ASSY, RETAINER PLATE-DRIVE TUBES	B
40	1	H10321	SCREW, HEX 10-32 X 1	-
39	1	A4353	ASSY, TUBE W/BRG-UPPER	A
38	1	A4288	SHAFT, DRIVE-UPPER	A
37	4	V2542	RING, SNAP	A
36	4	T3155	GEAR, DRIVEN	A
35	2	A4212	SPACER, GEAR	A
34	2	C2605	HOUSING, DRIVE	D
33	1	A2604	ASSY, DRIVE SHAFT TUBE W/BRG	A
32	2	SF103212	SCREW, SOC FLAT 10-32 X 1/2	-
31	1	A2612	COLLAR, GUARD	A
30	1	A4285	SHAFT, DRIVE LOWER	A
29	1	A4291	SHAFT, DRIVE LOWER	A
28	6	T3192	KEY, WOODRUFF	A
27	6	T3167	RING, SNAP	A
26	2	A2703	PULLY, DRIVE 2.88 OD X .75 BORE	B
25	2	A4213	SPACER, PULLEY	A
24	4	P4024	BEARING, THRUST	A
23	14	T3129	WASHER, THRUST	A
22	1	A2728	SEAL, THRUST BEARING	A
21	1	A2615	ASSY, LOWER REAR PIVOT	B
20	1	A2673	ASSY, PIVOT W/BRG-LOWER	A
19	1	A2777	GUARD, SMALL (BELGIUM)	A
18	3	N11420	NUT, HEX JAM 1/4-20	-
17	3	SF142012	SCREW, SOC FLAT 1/4-20 X 1/2	-
16	1	A4294	LEVER, SPRING	A
15	1	A2670	SPRING, EXTENSION	A
14	1	A2655	BRACKET, SPRING (HOOK)	A
13	5	NH1032	NUT, HEX 10-32	-
12	2	WIT10	WASHER, INT TOOTH #10	-
11	2	A2722	PIVOT, HEX	A
10	1	A2614	PIVOT, UPPER REAR	A
9	2	SB142058	SCREW, SOC BTN 1/4-20 X 5/8	-
8	3	WS14	WASHER, SPRING 1/4	-
7	2	SB142058	SCREW, SOC BTN 1/4-20 X 5/8	-
6	2	A2723	ASSY, ROD-PIVOT	A
5	REF	A4382	ASSY, SWING CHANNEL	A
4	REF	A4258	BUSHING, SWING CHANNEL	A
3	1	A4378	CHANNEL, SWING	B
2	2	A2701	BELT, VARIABLE SPEED	A
1	1	C2601	BRACKET, MOUNTING	C
97	2	WIT38	WASHER, INTERNAL TOOTH 3/8	-
96	2	NJ3816	NUT, JAM 3/8-16	-
95	2	H38162	SCREW, HEX HD 3/8-16 X 2	-
94	2	66291	EYE BOLT, SWING 3" LG	A
93	2	NL3816	NUT, LOCK 3/8-16	-
92	1	A2777	GUARD, SMALL (BELGIUM)	A
91	1	A2776	GUARD, LARGE (BELGIUM)	B
90	1	67309	GREASE, GEAR LUBRICANT	A
89	2	H1032112	SCREW, HEX 10-32 X 1 1/2	-
88	1	A2737	GUIDE, TAPE	A
87	1	10757	LABEL, WARNING-GUARDS	A
86	6	SB103238	SCREW, SOC BTN 10-32 X 3/8	-
85	4	SS103288CP	SCREW, SOC SET 10-32 X 5/8 CP	-
84	2	SS1032516	SCREW, SOC SET 10-32 X 5/16	-
83	REF	A2765	GUARD, KNIFE LEFT	B
82	4	H142058	SCREW, HEX 1/4-20 X 5/8	-
81	4	SB142038	SCREW, SOC BTN 1/4-20 X 3/8	-
80	4	A2624	SPACER, HEX	A
79	2	H3816134	BOLT, HEX 3/8-16 X 1 3/4	-
78	4	A2702	ASSY, IDLER PULLEY W/BRG	B
77	REF	A2620	CHANNEL, FT & REAR	A
76	REF	A2618	PIVOT, UPPER-FRONT	A
75	1	A2705	GUARD, UNDER-LEFT	B
74	1	A2707	GUARD, LEFT-TAPER	B
73	1	A2704	GUARD, UNDER-RIGHT	C
72	1	A2706	GUARD, RIGHT-TAPER	B
71	1	C2640	GUARD, BELT-DRIVE	C
70	2	B4273	ASSEMBLY, BOX-GEAR	C
69	6	A2611	SPACER, STEP	A
68	2	A4298	ASSY, GEAR-ILDER	A
67	1	P4297	BEARING, BALL (ILDER GEAR)	A
66	2	T3145-1	GEAR, ILDER	A
65	3	H3816114	BOLT, HEX 3/8-16 X 1 1/4	-
64	8	A3934	WASHER, ILDER	A
63	1	A2643	ASSY, PULLEY-ILDER 1.92 OD X .88 BORE	A

△ 97 2 WIT38 WASHER, INTERNAL TOOTH 3/8 -

ITEM	QTY	DWG NO.	DESCRIPTION	SIZE
71	1	C2640	GUARD, BELT-DRIVE	C
70	2	B4273	ASSEMBLY, BOX-GEAR	C
69	6	A2611	SPACER, STEP	A
68	2	A4298	ASSY, GEAR-ILDER	A
67	1	P4297	BEARING, BALL (ILDER GEAR)	A
66	2	T3145-1	GEAR, ILDER	A
65	3	H3816114	BOLT, HEX 3/8-16 X 1 1/4	-
64	8	A3934	WASHER, ILDER	A
63	1	A2643	ASSY, PULLEY-ILDER 1.92 OD X .88 BORE	A

FISCHBEIN CO.
 an AXIA enterprise
 151 WALKER ROAD, STATESVILLE, NC 28677
 PHONE: (704) 871-1159 FAX: (704) 872-3303

SCALE	PART NUMBER	REV
FULL	A2700	0
SHEET 1	OF 3	