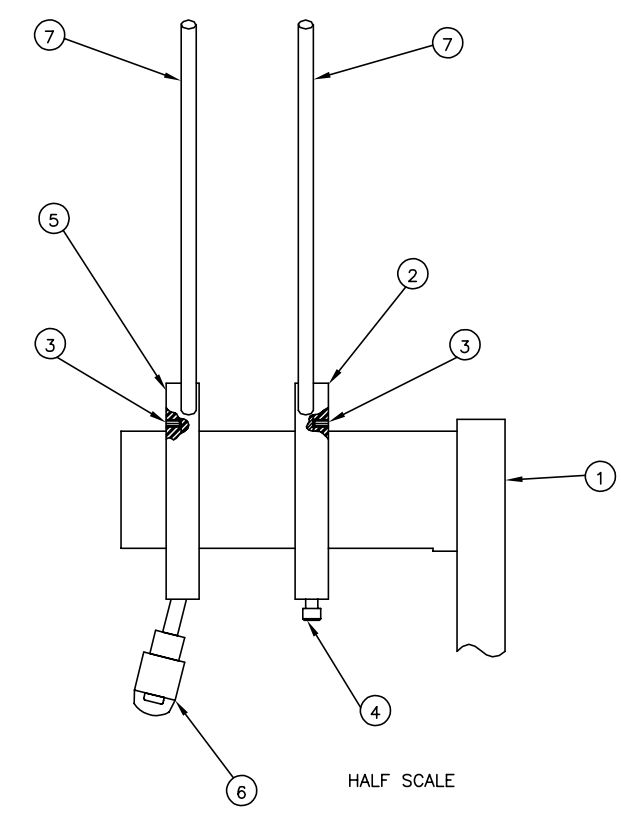
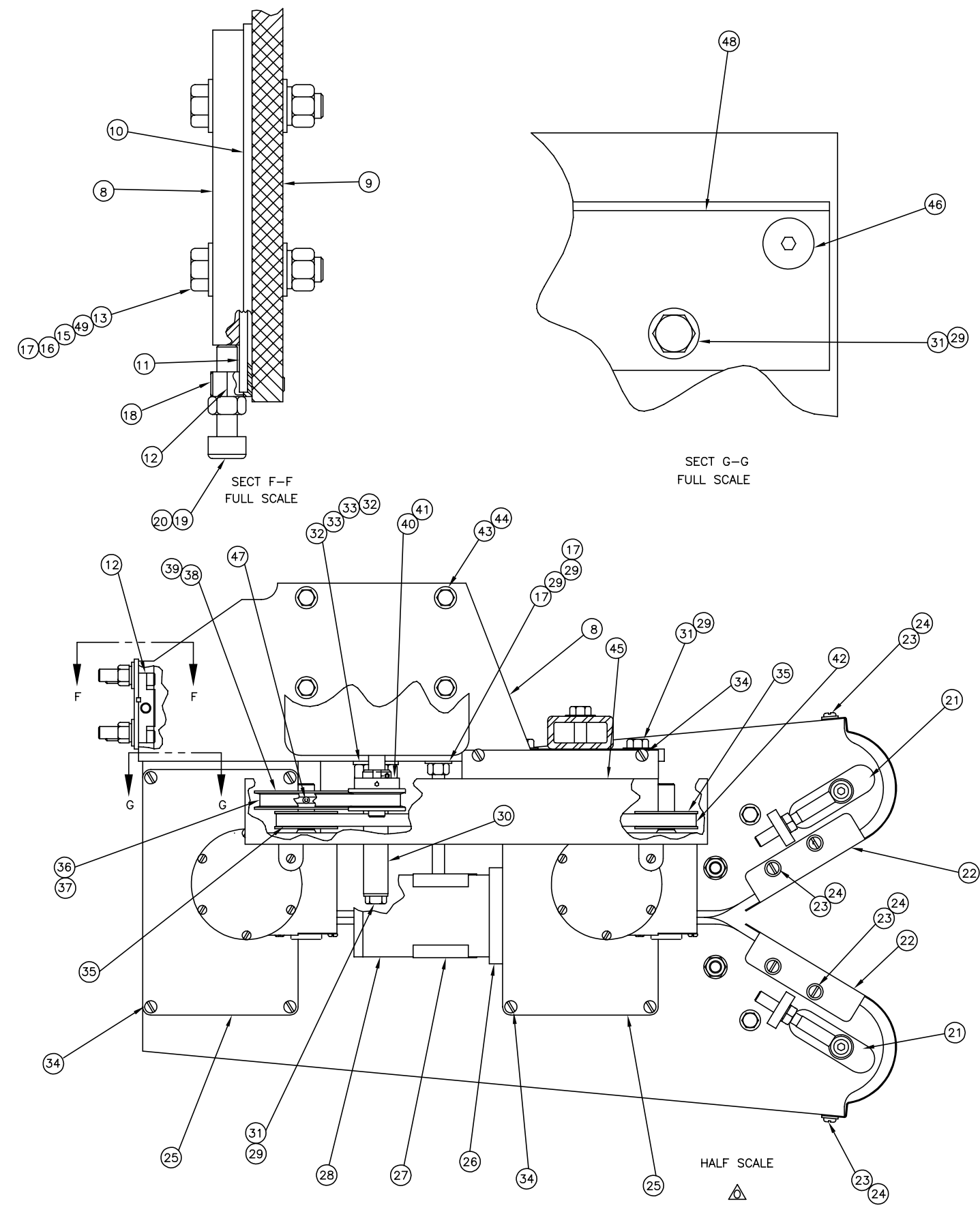


REV	ECN	CHANGES	DATE	DR	CK
N	9826312	ADDED ITEM 49; RVS ITEM 15 QTY (WAS 6)	9/98	JS	RS
O	001081	RVS TOP VIEW, ADD TENS. TAB SEE SHEET 1 ALSO.	6/00	AB	



49	3	66210	WASHER, FLAT 5/16 (WROUGHT)	A
48	REF	C2605	HOUSING, DRIVE	D
47	2	SS103258	SCREW, SOC FLAT 3/8-16 X 1	-
46	1	SF38161	BOLT, SOC FLAT 3/8-16 X 1	-
45	REF	C2640	GUARD, BELT-DRIVE	C
44	4	WF516	WASHER, FLAT 5/16	-
43	4	H5161812	SCREW, HEX 5/16-18 X 1/2	-
42	1	P2653	BELT, V (3L280)	A
41	REF	A4338	ASSY, ADJUSTABLE PULLEY (58-70 FPM)	-
40	1	A4335	ASSY, ADJUSTABLE PULLEY (35-57 FPM)	A
39	REF	P4206	PULLEY, 2.4 OD X 1/2 B (48-70 FPM)	A
38	1	P2654	PULLY, 3.17 OD X 1/2 B (35-47 FPM)	A
37	REF	P4229-120	BELT, DRIVE 3L120 (48-70 FPM)	A
36	1	P4229-130	BELT, DRIVE 3L130 (35-47 FPM)	A
35	2	P2645	PULLY, 1-92 OD X 1/2 BORE	A
34	10	B103238	SCREW, BTN 10-32 X 3/8	-
33	4	WF34	WASHER, FLAT 3/4	-
32	4	NH3416	NUT, HEX 3/4-16	-
31	6	H38161	BOLT, HEX 3/8-16 X 1	-
30	2	A4814	ROD, MOUNT-FOLDER	A
29	8	WF38	WASHER, SPRING 3/8	-
28	1	A2741	WAX, TAPE LUBRICATOR	A
27	1	A2740	WELDMENT, SLIDE-TAPE LUB	B
26	REF	A2737	GUIDE, TAPE	A
25	2	A2633	COVER, DRIVE	A
24	6	WF10	WASHER, FLAT #10	-
23	6	B103214	SCREW, BTN 10-32 X 1/4	-
22	2	B2695	GUARD, BELT-FRONT	B
21	2	A2727	COVER, BEARING	A
20	1	NH51618	NUT, HEX 5/16-18	-
19	1	SC51618112	SCREW, SOC CAP 5/16-18 X 1 1/2	-
18	2	SC142078	SCREW, SOC CAP 1/4-20 X 7/8	-
17	5	NH3816	NUT, HEX 3/8-16	-
16	3	WL38	WASHER, LOCK	-
15	3	WF38	WASHER, FLAT 3/8	-
14				
13	3	H3816134	BOLT, HEX 3/8-16 X 1 3/4	-
12	1	A2649	BLOCK, JACK	A
11	1	A2648	KEY, 1/8 SQ	A
10	1	A2647	PLATE, SHIM	A
9	REF	C4104	BRACKET, HINGE	C
8	REF	C2601	BRACKET, MOUNTING	C
7	4	A4833	ROD, CLAMP-REEL	A
6	1	A4831	KNOB, HAND	A
5	1	A4828	CLAMP, FRONT REEL TAPE	B
4	1	SC51618114	SCREW, SOC CAP 5/16-18 X 1 1/4	-
3	4	SS1032516	SCREW, SOC SET 10-32 X 5/16	-
2	1	A4829	CLAMP, BACK REEL TAPE	B
1	REF	A4826	WELDMENT, TAPE REEL SUPPORT	B

FISCHBEIN COMPANY
CONFIDENTIAL AND PROPRIETARY
INFORMATION

FISCHBEIN CO. WORKMANSHIP STANDARD ENQ-01 IS AN INTEGRAL COMPONENT OF THIS DRAWING		DATE		DATE	
DR	RDS	09/25/94	DR	RS	9/94
CK	RS		DR	RS	
BREAK ALL SHARP EDGES REMOVE ALL BURRS					
ALL TOLERANCES NON-ACCUMULATIVE					
MATERIAL		NAME			
BOM		ASSY, AUTO TAPER			
FINISH		WHERE USED			
		35108			
DIMENSIONAL TOLERANCES		SCALE	PART NUMBER	REV	
DECIMAL .XXX ±.005		FULL	A2700	0	
DECIMAL .XX ±.02		SHEET	3	OF 3	
FRACTIONAL ±.030					
ANGLES ± 30 MIN					
(UNLESS OTHERWISE SPECIFIED)					